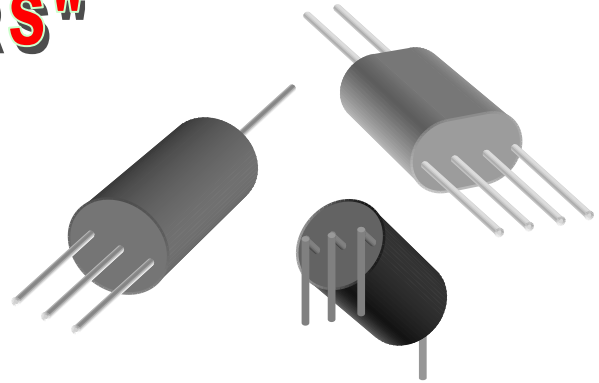


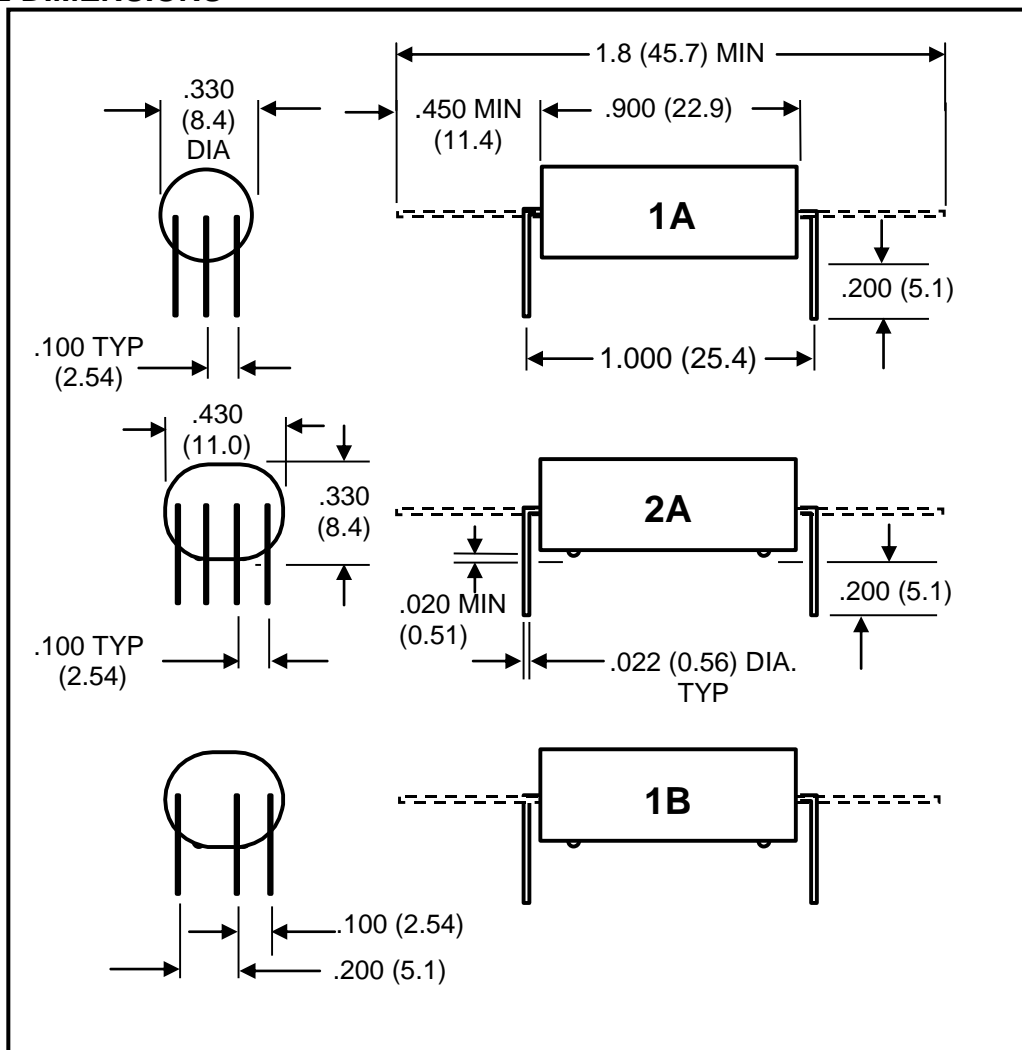
# "T" SERIES

## "THE COST CUTTERS"

- High quality – Low cost.
- Flame retardant plastic shell sealed with epoxy.
- Total environmental protection.
- Axial leads or P.C. board mounting plug-in leads with 1.000" x .100" grid pattern.
- 10 watts contact ratings is standard. Various contact ratings are available including 50 watts and 1 Amp switching.



### OUTLINE DIMENSIONS



#### NOTES:

1. Dimensions are inches (mm).
2. Dot line indicates the axial lead series.

# “T” SERIES

## ELECTRICAL AND OPERATING CHARACTERISTICS

Characteristics	Form A/B
<b>Contact Ratings:</b> Power (Resistive load) Voltage (Max. switching) Current (Max. switching) (Max. carrying)	10 Watts 200 VDC 0.5 Amps 2.0 Amps
Breakdown Voltage (Min.) (Across contact)	300 VDC
Contact Resistance (Max. Initial)	0.2 Ohms
Operating Time (Typical)	0.5 mSec
Release Time (Typical)	0.2 / 0.5 mSec
Bounce Time (Typical)	0.25 mSec
Insulation Resistance (Min.)	10 <sup>10</sup> Ohms
Capacitance (Typical)	0.2 pF
<b>Life Expectancy:</b> Low level: Rated load:	100 x 10 <sup>6</sup> Operations 10 x 10 <sup>6</sup> Operations
Operating Temperature	-40°C to +85°C
Vibration	20G, 10 to 2000 Hz
Shock	50G @ 11 MS durations

## PART NUMBERS AND COIL DATA (@ 25°C)

Contact Form	Part Number (Axial Leads)	Part Number (Formed Leads)	Nom. Volt VDC	Max. Volt VDC	Coil Res. Ohms +/-10%	Must Operate VDC	Must Release VDC	Schematic Top-view
1A	TO051A125	TU051A125	5	7.5	125	3.8	0.5	
	TO051A500	TU051A500			500			
	TO061A125	TU061A125	6	9	125	4.5	0.6	
	TO061A500	TU061A500			500			
	TO121A500	TU121A500	12	18	500	9.0	1.2	
	TO121A1K0	TU121A1K0			1000			
	TO241A2K0	TU241A2K0	24	36	2000	18.0	2.4	
TO241A4K0	TU241A4K0	4000						
2A	TO052A100	TU052A100	5	7.5	100	3.8	0.5	
	TO052A250	TU052A250			250			
	TO062A125	TU062A125	6	9	125	4.5	0.6	
	TO062A250	TU062A250			250			
	TO122A750	TU122A750	12	18	750	9.0	1.2	
	TO122A1K0	TU122A1K0			1000			
	TO242A2K0	TU242A2K0	24	36	2000	18.0	2.4	
TO242A3K0	TU242A3K0	3000						
1B	TO051B100	TU051B100	5	7.5	100	3.8	0.5	
	TO051B250	TU051B250			250			
	TO061B125	TU061B125	6	9	125	4.5	0.6	
	TO061B250	TU061B250			250			
	TO121B750	TU121B750	12	18	750	9.0	1.2	
	TO121B1K0	TU121B1K0			1000			
	TO241B2K0	TU241B2K0	24	36	2000	18.0	2.4	
TO241B3K0	TU241B3K0	3000						